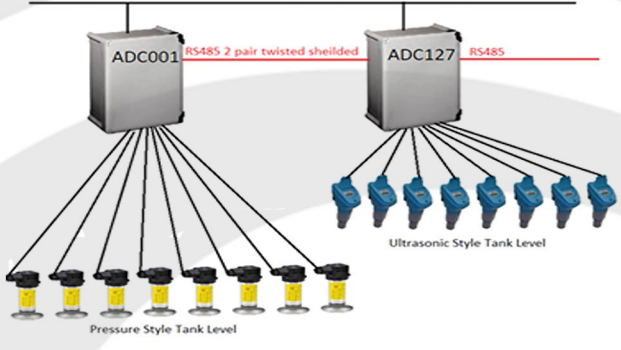
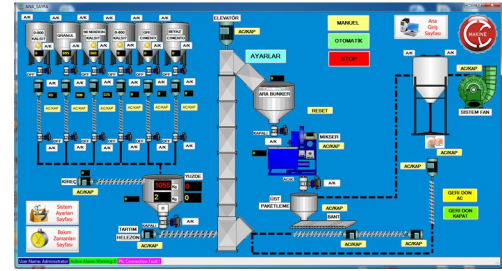




Cellar Master

With Cellar Master you can automatically monitor and record the many of the cellar equipment and processes. A combination of low voltage wired and wireless remote sensors are used to provide the live data such as tank level, temperature, pump status, pressure and flow. This information is displayed live, and logged on to a computer for analysis.



Tank Monitoring

Tank level can be measured by either pressure sensors located at the bottom of each tank or via ultrasonic sensors fitted at the top of the tank. Tanks located together would be wired to a Node. This node would communicate the information via a wireless or wired network cable to a desktop computer.

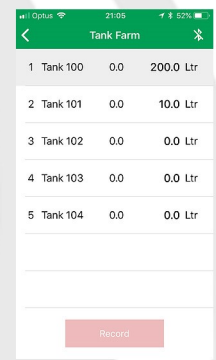


Mologer - Tank and Depth Logging App

Mologer allows the user to log measurements by setting up a route, then adding data points to the route. These data points store time and date stamp recordings. They can also be set to scale a measurement. Thus a tank or silo measurement can be converted to volume or weight. After recording, data can be exported as a csv file.



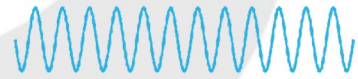
The Mologer app connects to Bluetooth enabled Leica laser distance meters and can be connected to the MiTi Pumps Mologer ultrasonic distance meter



Tank Calibration

Tank dipping is widely used as a method of calculating product volume, however the various shapes and sizes of tanks can often make calculating the actual volume very difficult.

- Calibrate tanks to within 1%
- Provides a calibration formula allowing volume to be calculated from height.
- Calibration formula can be used with the portable laser measuring tool or the hard-wired system



MiTi Pumps can provide a tank calibration service using a pump, Massflow meter and a distance measuring device. The tank is filled with a known quantity of liquid while measuring the distance from the top of the tank to the top of the liquid. The outcome is an accurate calibration of the tanks' volume for various liquid heights. The Massflow meter used is accurate to within 1% of the volume pumped. Once completed, the results can be used when dipping with a tape measure or loaded into the MiTi Pumps' software for either the portable laser measuring device or the permanent hard-wired tank monitoring system.

Contacts:

Sales - sales@multitorque.com
 Accounts - accounts@multitorque.com
 Web - www.mitipumps.com.au

Queensland
 Unit 5, 222 Mount Crosby Rd
 Tivoli, 4305
 Contact: 07 3812 9332

Western Australia
 Unit 2, 40 Inspiration Dr
 Wangara, 6065
 Contact: 08 9302 2400